

## Installation Guide for eyebeam.

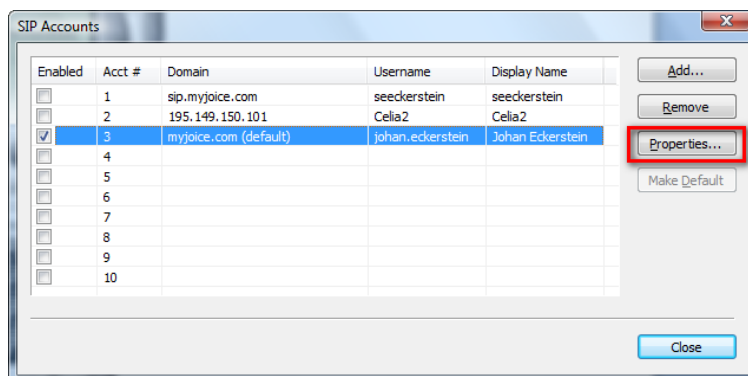
eyeBeam is the client MAC users use to contact Joice users. You can buy eyebeam from [here](#)

The pictures below show how your settings on eyebeam should be. Fill in the same unless otherwise says next to the pictures below.

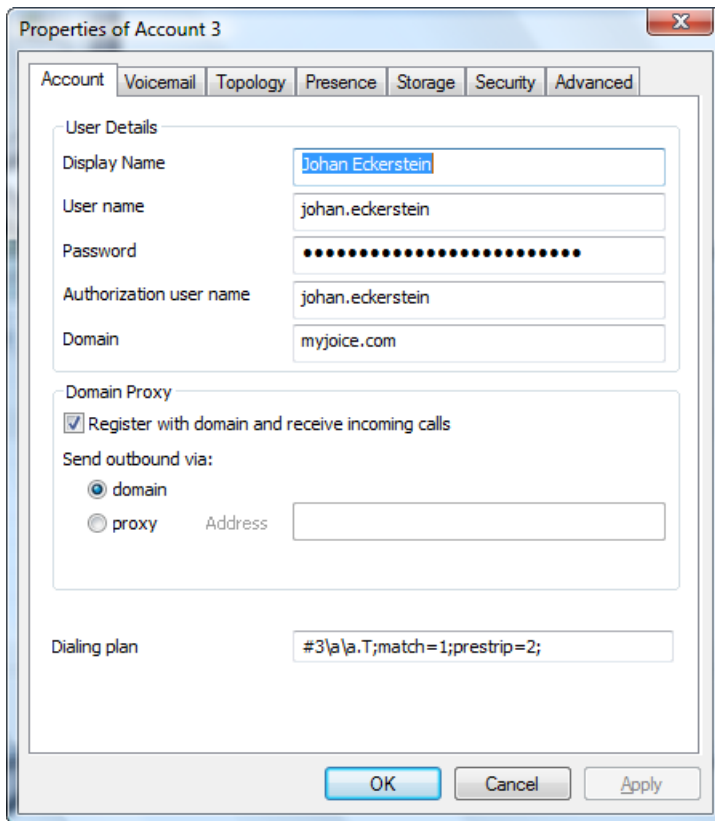


Click in the area of the red box to view the menu.

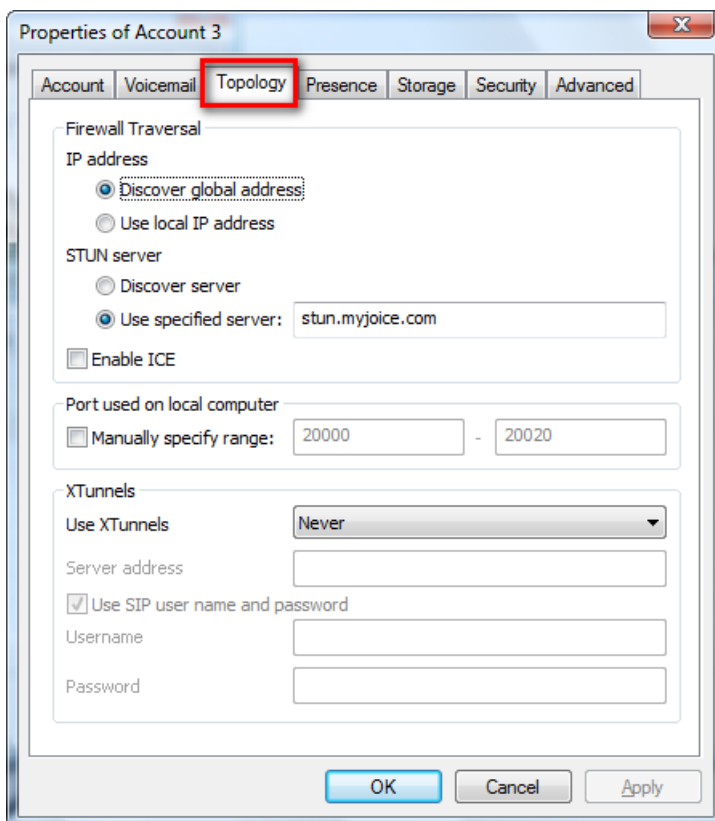
Click then on SIP Account Settings...



Now this box pop up and click on Properties...



Be sure these settings are right. But of course it is your Display name, User name and Authorization user name you should fill in.



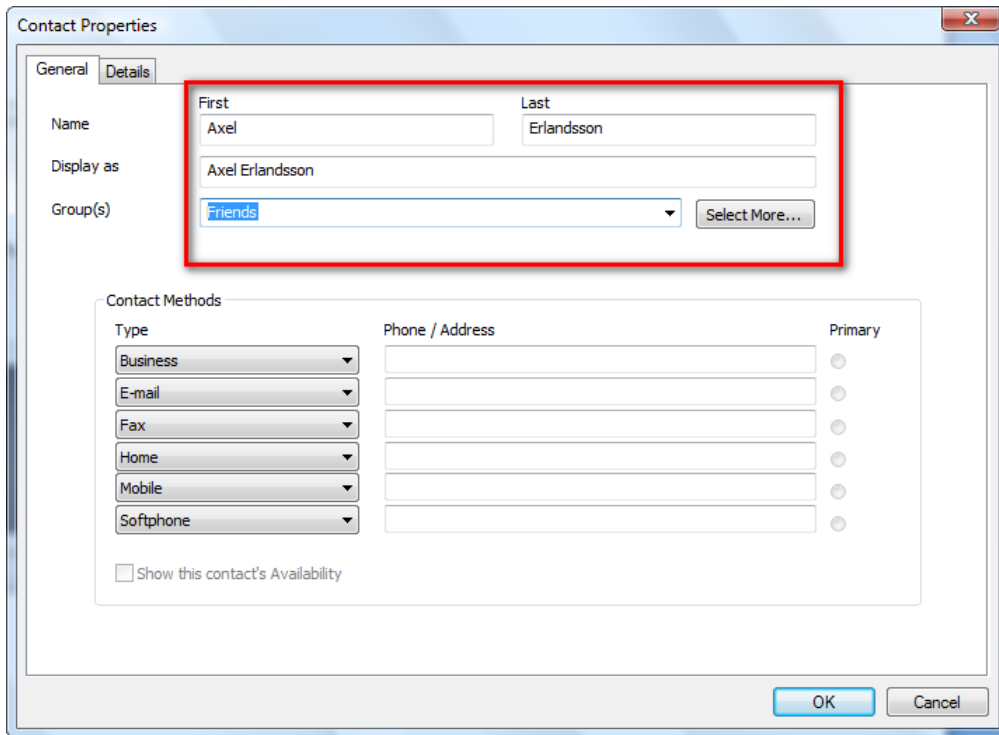
Also check settings during Topogoly.



To show the video and contacts window click on the arrows



To add contacts click on contacts then Add Contact...



Fill in right details about your contact.



Click on your contact you want to call and then click on the green phone to start calling.